

East & North
FINLAND

Itä- & Pohjois-
SUOMI



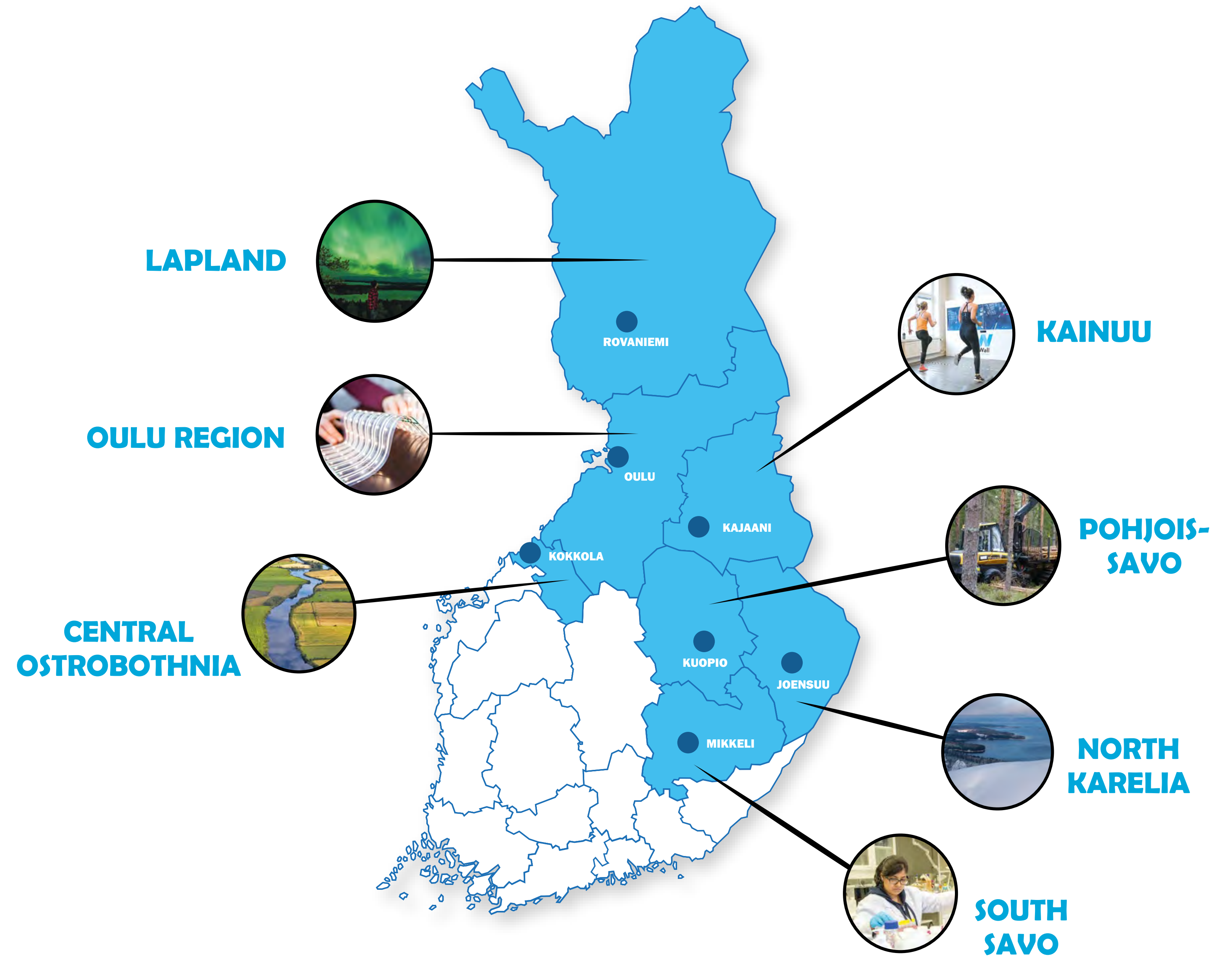
EAST AND NORTH FINLAND IN INDUSTRIAL TRANSITION



European Union
European Regional
Development Fund

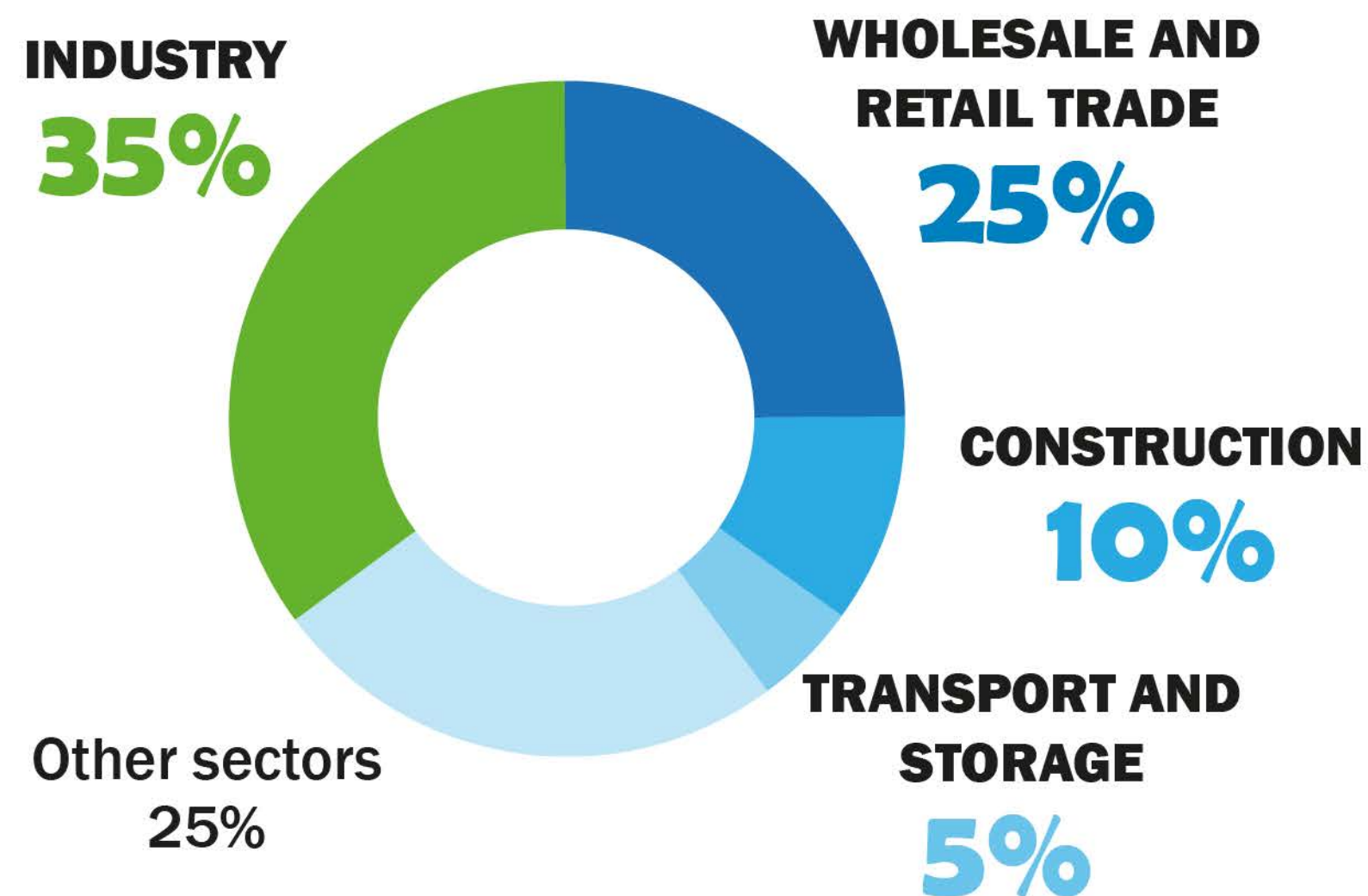
Leverage from
the EU
2014–2020

Seven regions of the ENF area

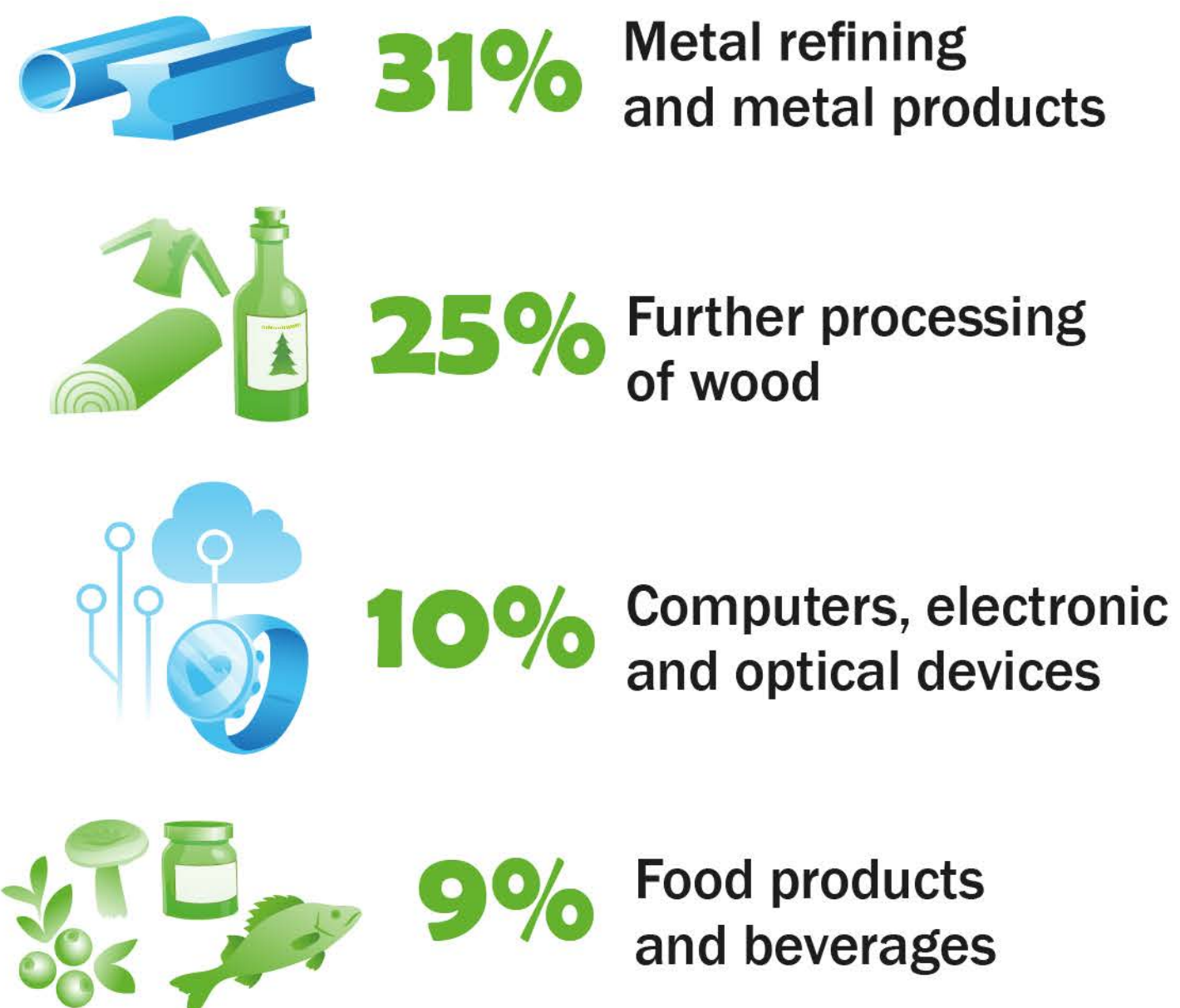


EAST AND NORTH FINLAND IN FACTS AND FIGURES

4 LARGEST SECTORS IN THE AREA
% OF THE TOTAL TURNOVER



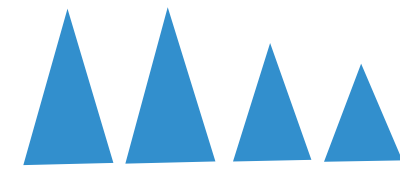
DISTRIBUTION OF THE INDUSTRY
% OF TURNOVER



**EDUCATION
AND RESEARCH**



- 3** UNIVERSITIES
- 3** UNIVERSITY CONSORTIA
- 7** UNIVERSITIES OF APPLIED SCIENCES
- OVER 20** VOCATIONAL INSTITUTES
- OVER 10** SEPARATE UNITS OF NATIONAL RESEARCH INSTITUTIONS



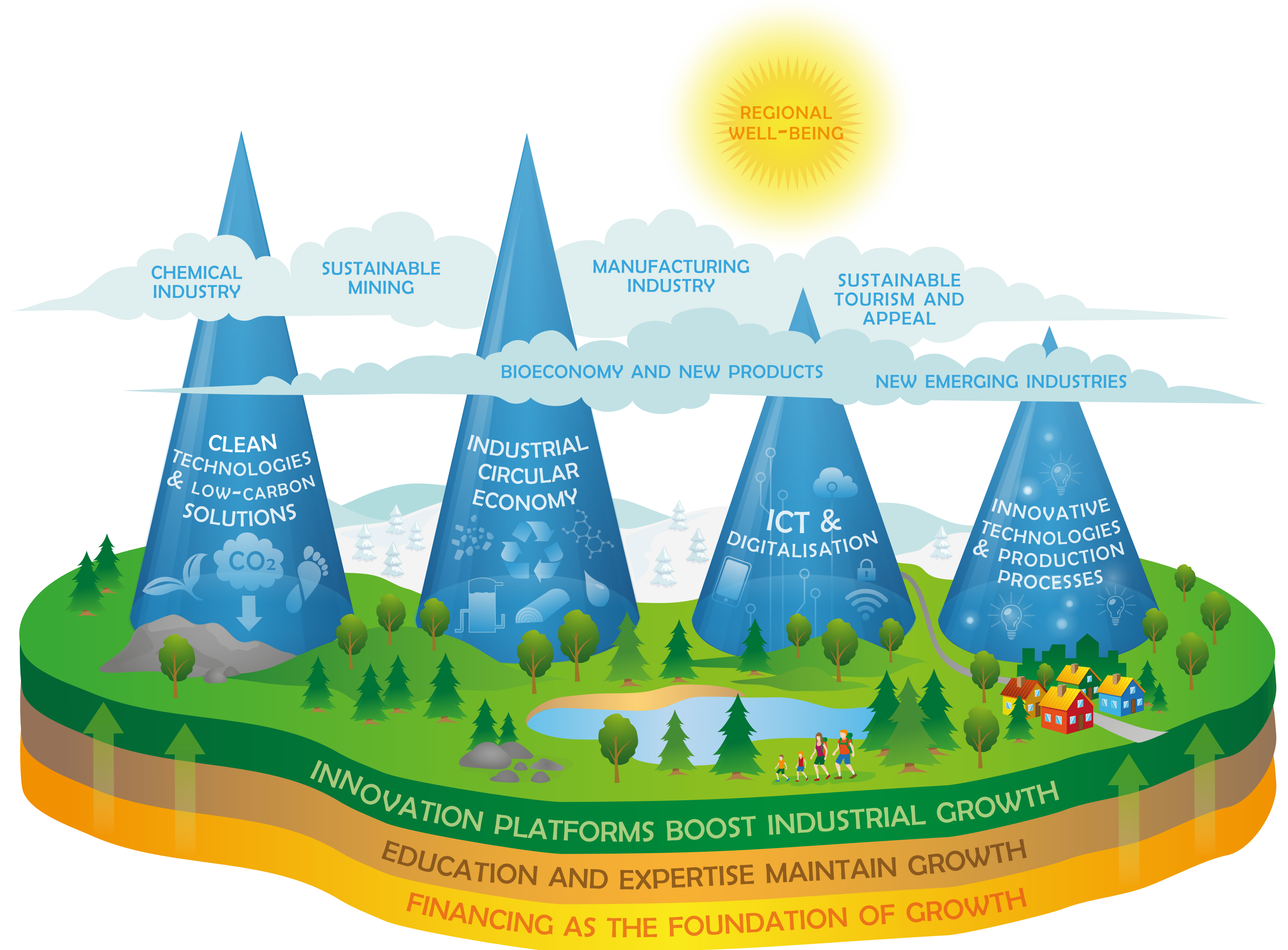
COMMON COMPETENCES

Supporting sustainable
development and increasing
the degree of processing



GROWTH SECTORS

East and North Finland's
thematic strengths in
smart specialisation



Cluster organisations

bring regional actors effectively together



Added value for business

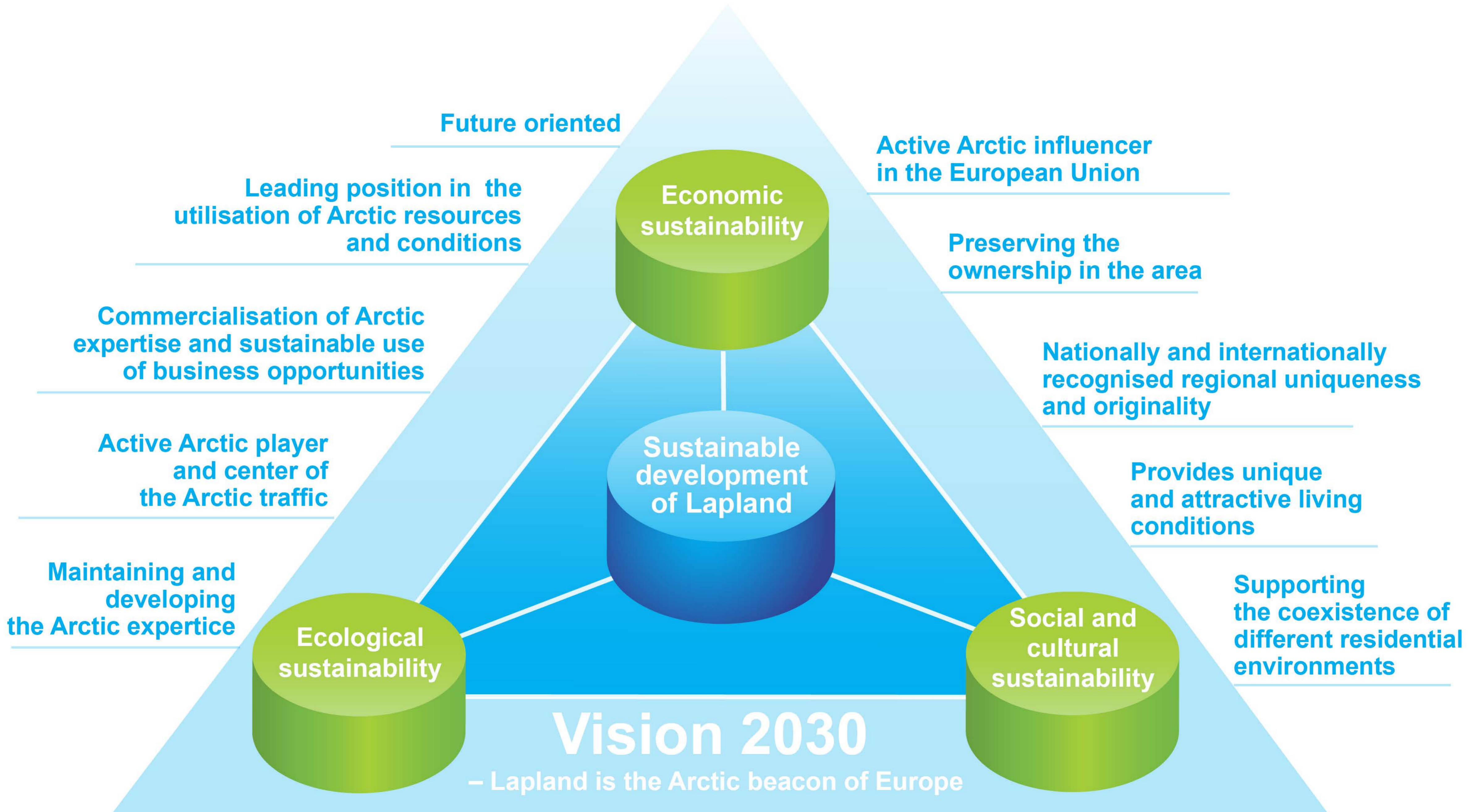
1 The cluster supports companies in utilising business support services, promoting research and acquiring financing.

2 The cluster can provide assistance in applying for joint EU project funding or responding to large calls for tender.

3 The cluster can help companies and other local actors with e.g. branding, marketing and promoting their interests.

4 Companies can find new collaboration models, international contacts and markets through the cluster.





ELMO Project Contacts

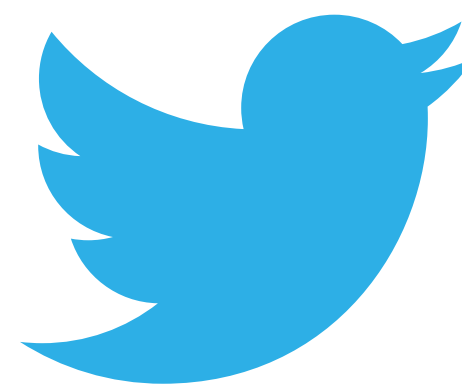
Project manager Mr Ilari Havukainen
ilari.havukainen@elmoenf.eu

Project coordinator Ms Paula Heikkilä
paula.heikkila@elmoenf.eu

East & North
FINLAND
Itä- & Pohjois-
SUOMI



elmoenf.eu



@elmo_enf



elmo@elmoenf.eu

East & North
FINLAND

Itä- & Pohjois-
SUOMI



EAST AND NORTH FINLAND IN INDUSTRIAL TRANSITION



European Union
European Regional
Development Fund

Leverage from
the EU
2014–2020