

INTRODUCTION TO JEMS

Joint Online Monitoring System

National Controllers Training,
26th September 2023

Interreg

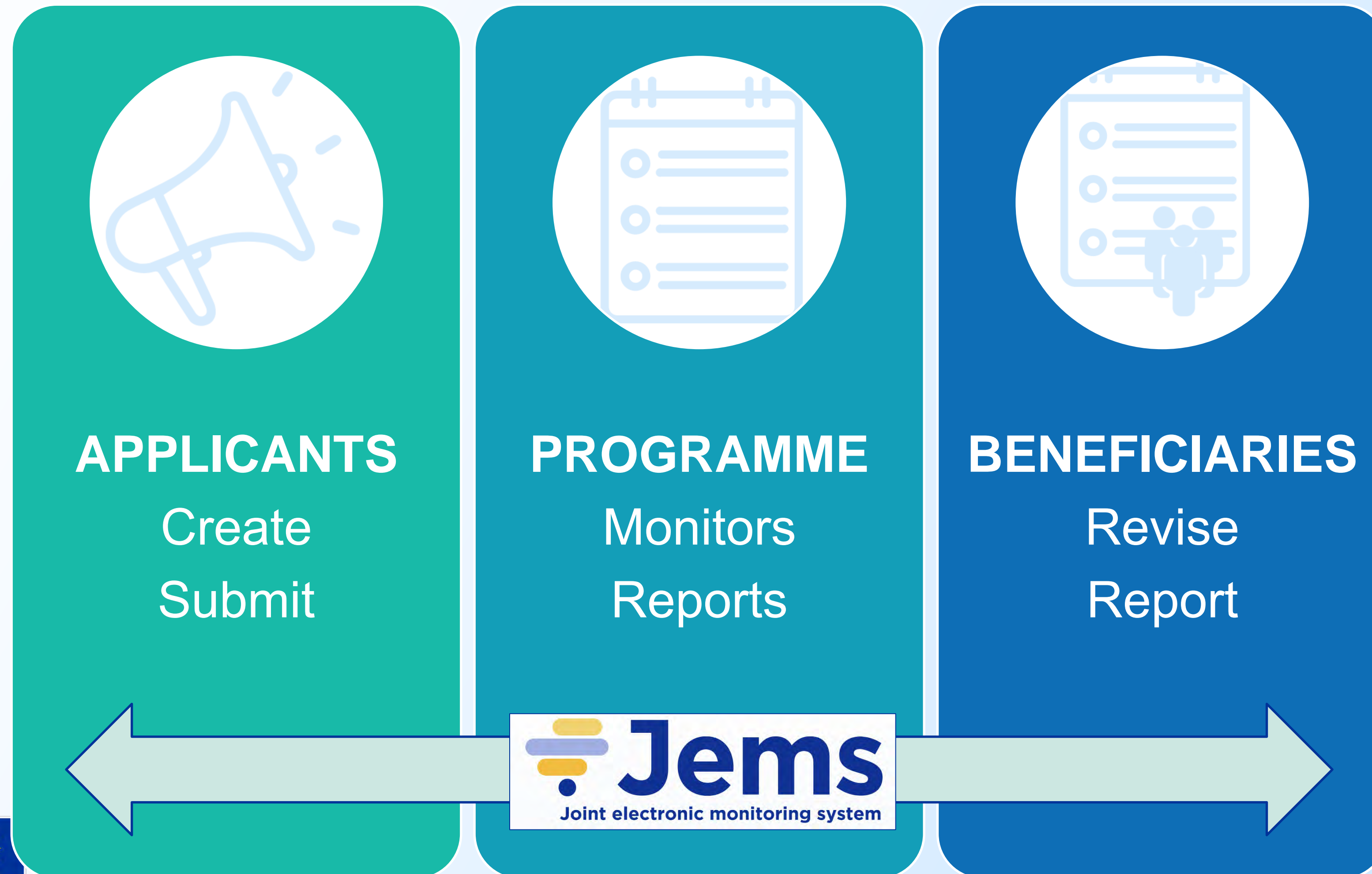


Co-funded by
the European Union

Northern Periphery and Arctic



What is the purpose of Jems



Designed to meet requirements

European Regulations

- E-Cohesion
- Auditing
- GDPR
- Accessibility
- Transparency
- Interoperability



Interreg



Co-funded by
the European Union

Northern Periphery and Arctic


Develop by Interreg for Interreg

Jems Family is growing

Programme No.
51
Interreg Next VI A
Italia-Tunisia

Programme No.
52
Interreg VI A Italia-
Malta

Welcoming Two New Programs to Our
Interreg Family!



63% of all Interreg programmes!!

5 la

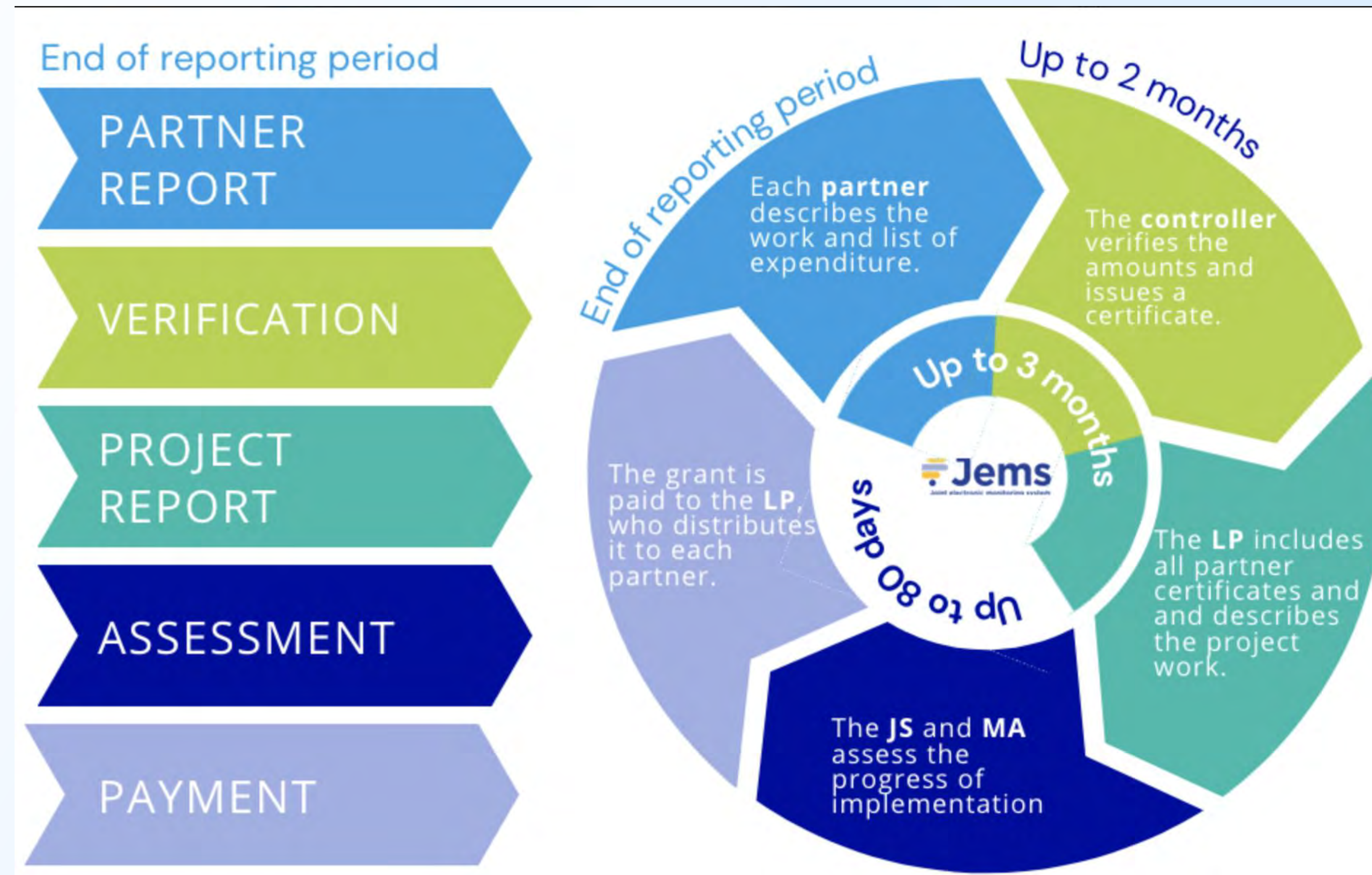
Interreg



Co-funded by
the European Union

Northern Periphery and Arctic

Reporting process



State of the art in Jems

After summer 2023

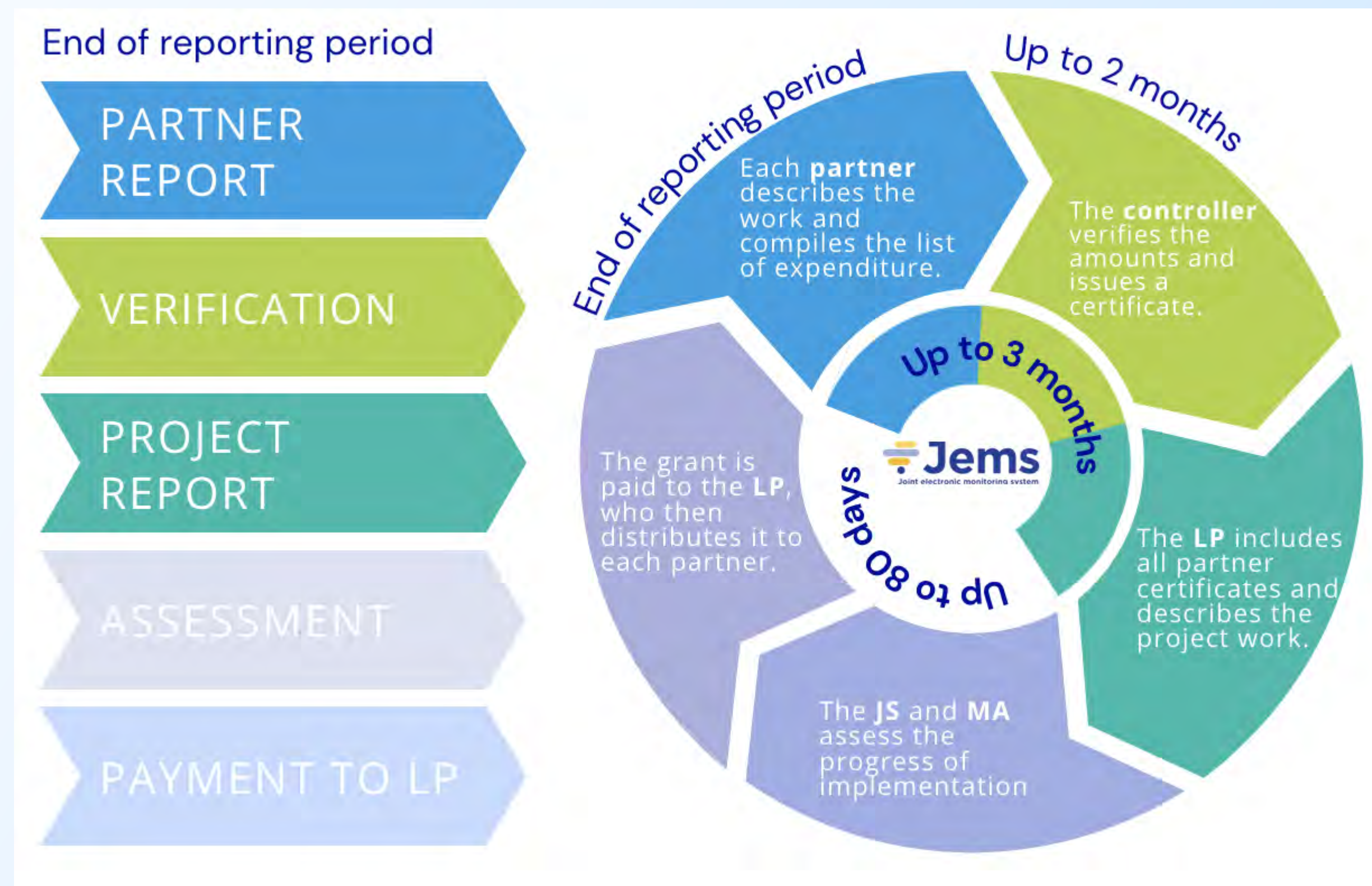
It is possible to complete and submit partner reports.

Controllers can make verifications.

LP can complete and submit project reports

Approx. autumn 2023

Approx. end of 2023



Interreg



Co-funded by
the European Union

Northern Periphery and Arctic

Programme Manual

Programme rules and requirements

<https://npa-pm.scrollhelp.site/ProgrammeManual>

Interreg NPA Programme Manual



- Overview of Changes
- 1. Introduction to the Interreg NPA
- › 2. How to Develop a Project
- › 3. How to Apply
- ✓ 4. How to implement
 - 4.1 Project Start-up
 - 4.2 Changes in the project implementation
 - 4.3 Control system
 - › 4.4 Reporting

Interreg



Co-funded by
the European Union

Northern Periphery and Arctic

Jems User Manual

<https://npa-jum.scrollhelp.site/>

Interreg NPA Jems User Manuals

Interreg NPA Jems Helpdesk

Interreg NPA Jems User Manuals

Welcome

Welcome to the Interreg NPA Jems user manuals! This space will be the knowledge base where users can access all resources and guidance necessary for preparin...

Live in Jems

Partner report

- Content & finance
- Pre-submission checks

Verifications

- Control work
- Pre-submission checks



Partner report pre-submission checks

- To reduce the number of possible mistakes
- To facilitate the work of the partners and of the controllers
- For a more efficient and smooth verification process

Example:

- No outstanding verification ongoing
- Reporting period dates
- Date of payment
- Completeness
- Budget limits



Control work pre-submission checks

- To reduce the risk of forgetting pieces of information
- To facilitate the work of the controllers
- For a more efficient and smooth verification process

TO SEE WHICH CHECKS ARE ACTIVE, click on *Run-pre submission* checks from the beginning of the control work.

Mostly focusing on completeness.



WORKSHOP Goals

- To familiarise and try out Jems
- To gather feedback on the processes
e.g. are they suitable for your organisation routines?
- To gather feedback on the templates and forms
prepared e.g. control checklist and report.

WORKSHOP

1. Go to our JEMS **TEST** environment
<https://gecko-npajems-testsystem.gecko.de/>
2. Log in with the temporary country user
e.g. SE-controller@interreg-npa.eu
pw
3. Click on the report and start the control work