



# NARI

**Network of Arctic Researchers in Ireland**



DR AUDREY MORLEY  
NATIONAL UNIVERSITY OF IRELAND  
GALWAY



[info@nari.ie](mailto:info@nari.ie)





NO. OF FULL MEMBERS  
40



NO. OF ASSOC. MEMBERS  
6



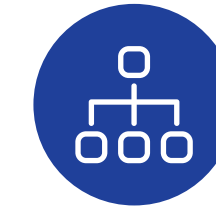
NO. OF WORKING GROUPS  
3



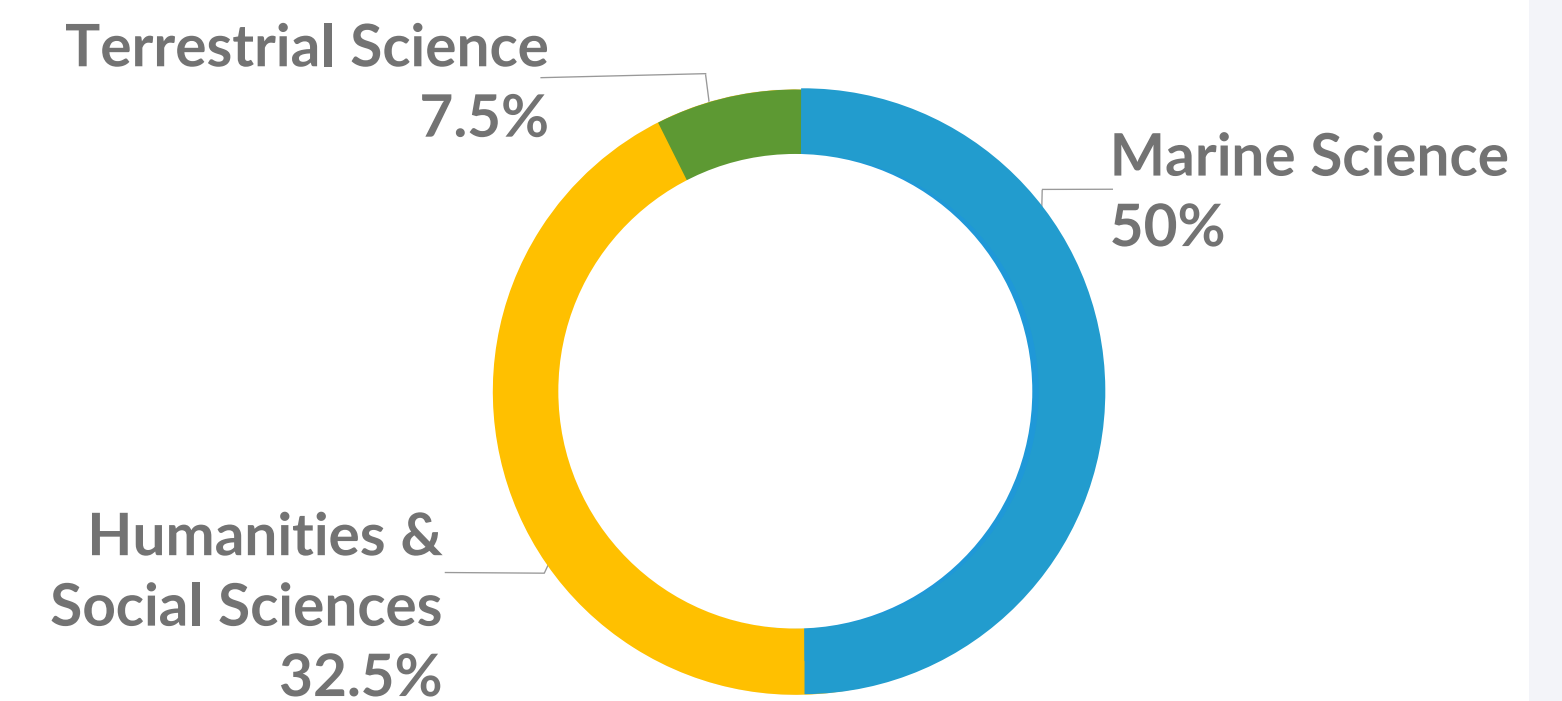
## Mission Statement

### Network of Arctic Researchers in Ireland

The mission of NARI is to, maintain and develop an informal all-island Irish-based network of Arctic researchers to facilitate collaboration, sharing and coordination of scientific activities linked to the Arctic, and to provide independent scientific advice to the public and policy makers.



## Network Breakdown by WG



## Goal No. 1

Enhance collaboration and promote Irish-based Arctic research activities.



## Goal No. 2

Provide evidence-based objective and independent scientific advice to policy makers and the public.



## Goal No. 3

Seek international polar cooperation and support the next generation of Arctic scientists.



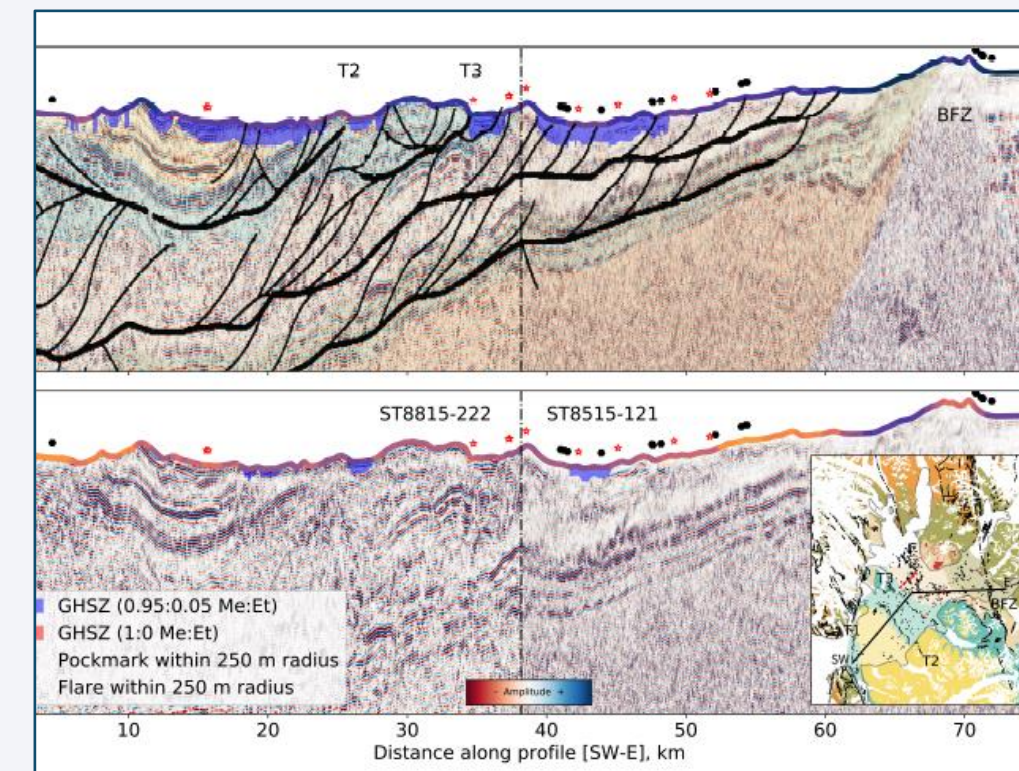
# WG: Marine Sciences

Supporting the *Arctic Monitoring and Assessment* and Arctic Contaminants Action Programmes



## Monitoring

**INTAROS** An integrated Arctic Observation System for regions of the Arctic. **CIAAN** Monitoring of Essential Climate Variables



## Methane Hydrates

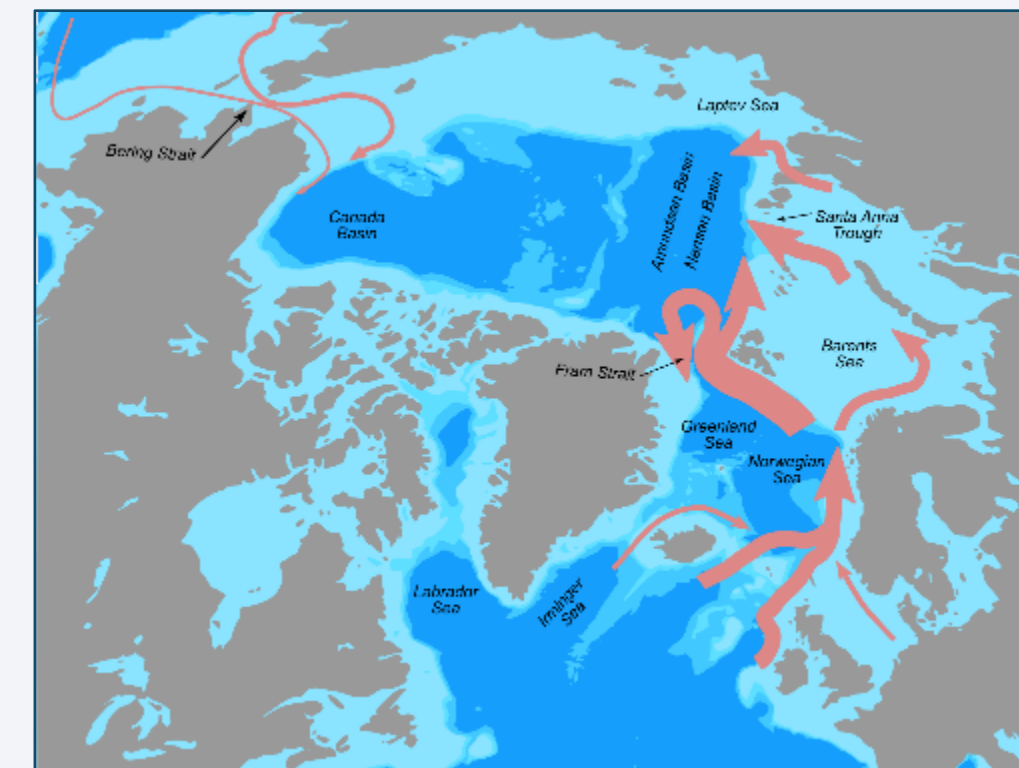
Monitoring the stability of methane deposits is crucial for assessment of emission scenarios

*Roy et al. 2019*



## Pollution

Assessment of Microplastic pollution pathways in Marine Sediments - Example Iceland in *Loughlin et al. 2021*



## Blue Action

Understanding the impact of a changing arctic on Northern Hemisphere Weather and Climate – What are Lower Latitude drivers of Arctic change?



# WG: Terrestrial Sciences

Supporting the *Conservation of Arctic Flora & Fauna* and *Arctic Monitoring and Assessment Programme*  
WGs



## CLIMADAPT

*Arctic-Alpine plants encounter intense selection pressure at their range peripheries.*



## History of the GIS

*Assessments of GIS history can inform us on the possible future contribution of net-loss of mass to sea level rise.*



## Seabird Watch

*Volunteer based monitoring program to assess population decline across entire species ranges*



# WG: Social Sciences and Humanities

Supporting the *Emergency Prevention, Preparedness and Response* and the *Sustainable Development* WGs



## AI-ARC

*Provides technological solution to maritime security and emergency management in the Arctic.*



## NorFish

*Investigates Archaeological remains of Arctic fisheries*



## The Irish Impact

*An analysis of historical and contemporary connections between Ireland and the Arctic*



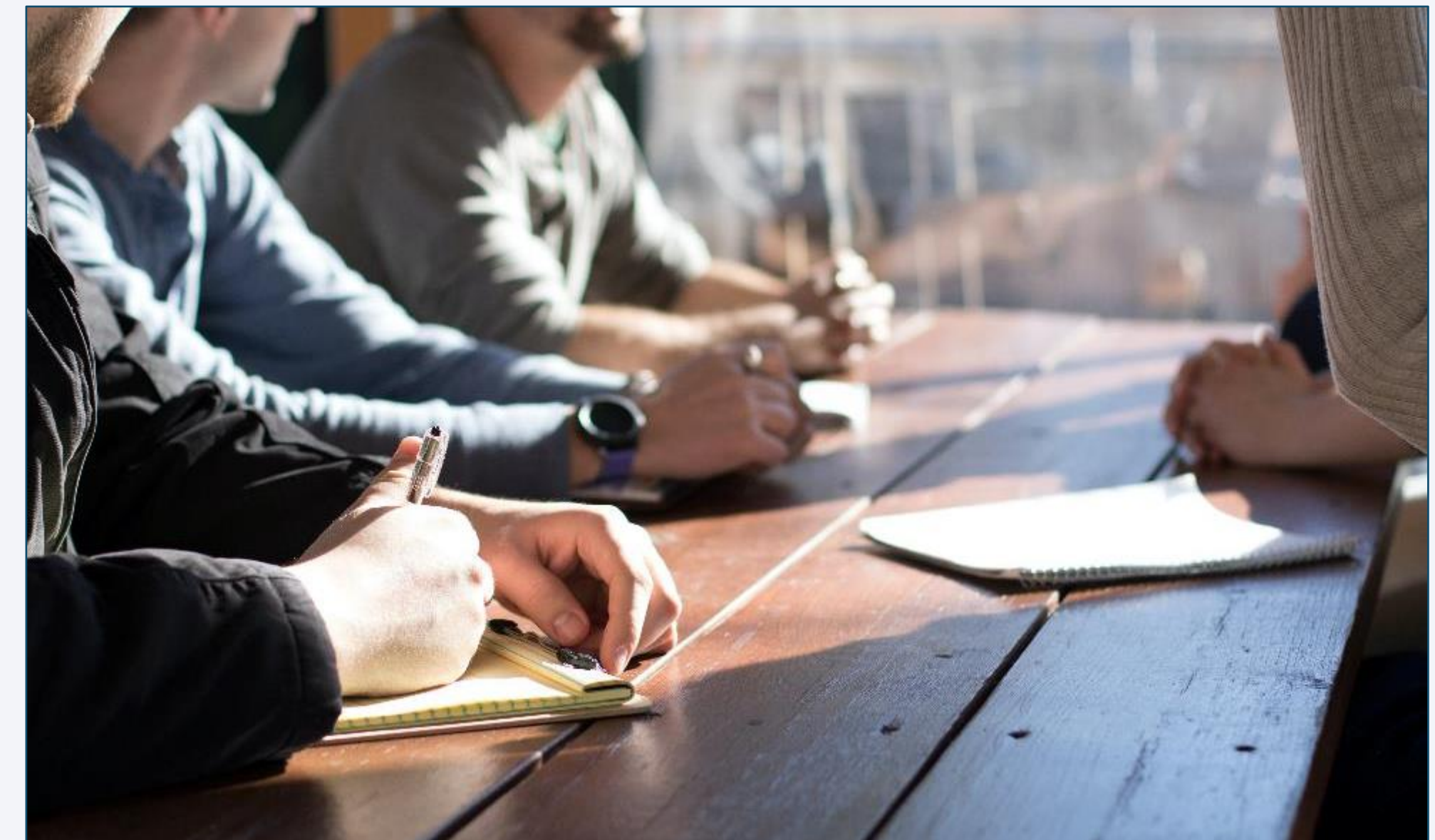
# Building Capacity

Provide training for the next generation of Arctic Researchers



## Emerging Leaders

*Invites selected candidates from different countries to participate in a blend of technical, social and cultural events accompanied by mentors from business, politics and academia*



## Arctic Innovation Summer School

*Enhance Arctic resilience by developing a widespread community of 'changemakers' who can disentangle Arctic challenges and enable short-and long-term change*



# Thank you.

## NARI members of featured projects:

Dr Audrey Morley, NUI Galway, CIAAN & Microplastics  
 Prof Peter Thorne, Maynooth U, INTAROS  
 Dr Srikumar Roy, iCRAG, Methane Hydrates  
 Dr Gerard McCarthy, Maynooth U, Blue-Action  
 Dr Conor Meade, Maynooth U, CLIMADAPT  
 Dr Gordon Bromley, NUI Galway, History of the GIS  
 Dr Mark Jessopp, U College Cork, SEABIRDWATCH  
 Robert Lynch, NMCI, AI-ARC  
 Dr Paul Montgomery, Trinity, Norfish  
 Dr Sarah Milne, U Limerick, The Irish Impact  
 Prof Quentin Crowley, Trinity, Arctic Innovation Summer School

## These projects are funded by:

