

eCAP

eHealth services for Child and Adolescent Psychiatry



Goal

To implement innovative mental health services that give:

- Better mental health care
- More timely care closer to home
- Improved and more equal access to mental health services
- Reduced waiting times
- More efficient use of health care resources

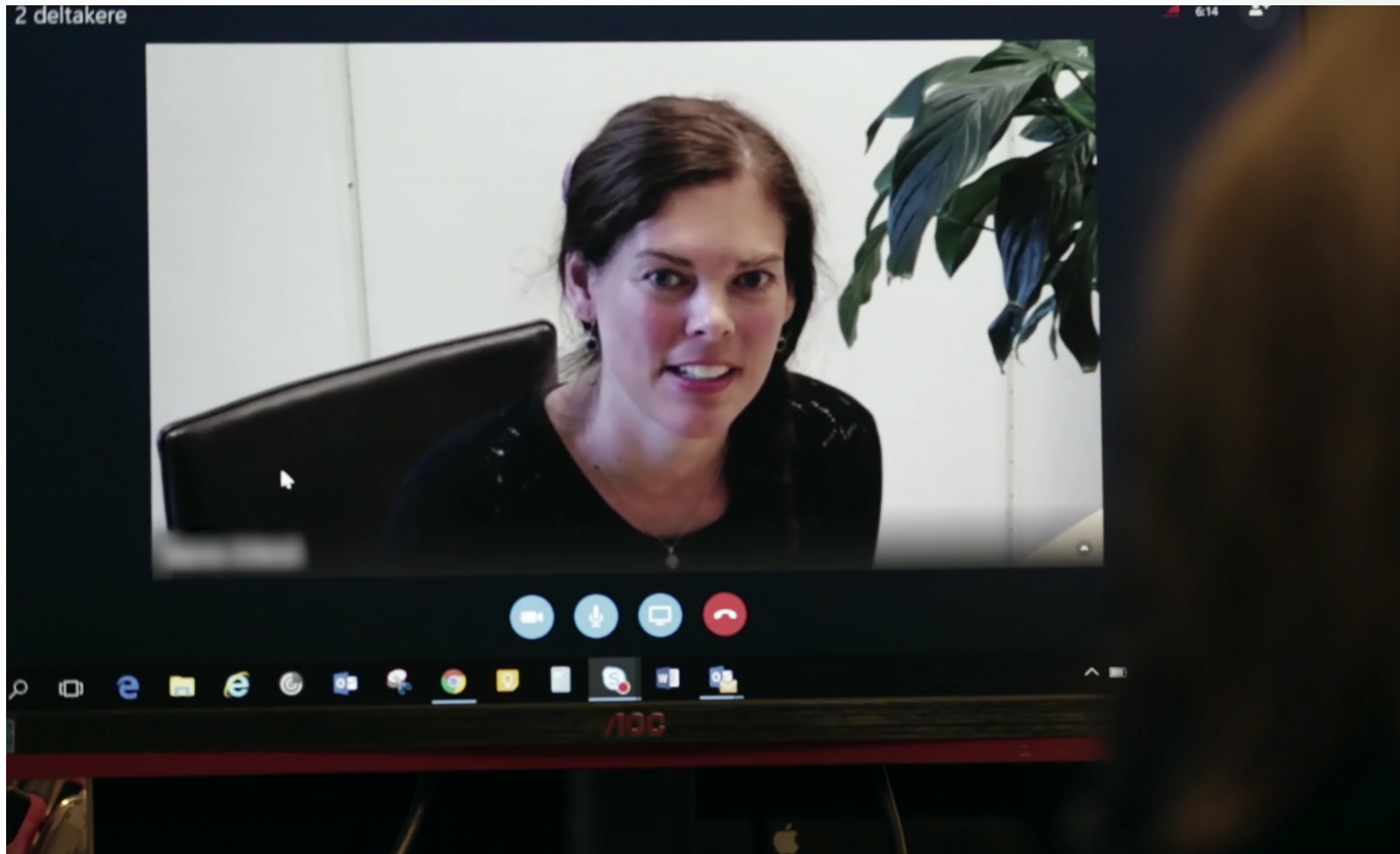
Partners

- Norwegian Centre for E-health Research
- University of Eastern Finland
 - Kuopio University Hospital
- University of Aberdeen: Centre for Rural Health
- Luleå Technical University



Photo: Colourbox

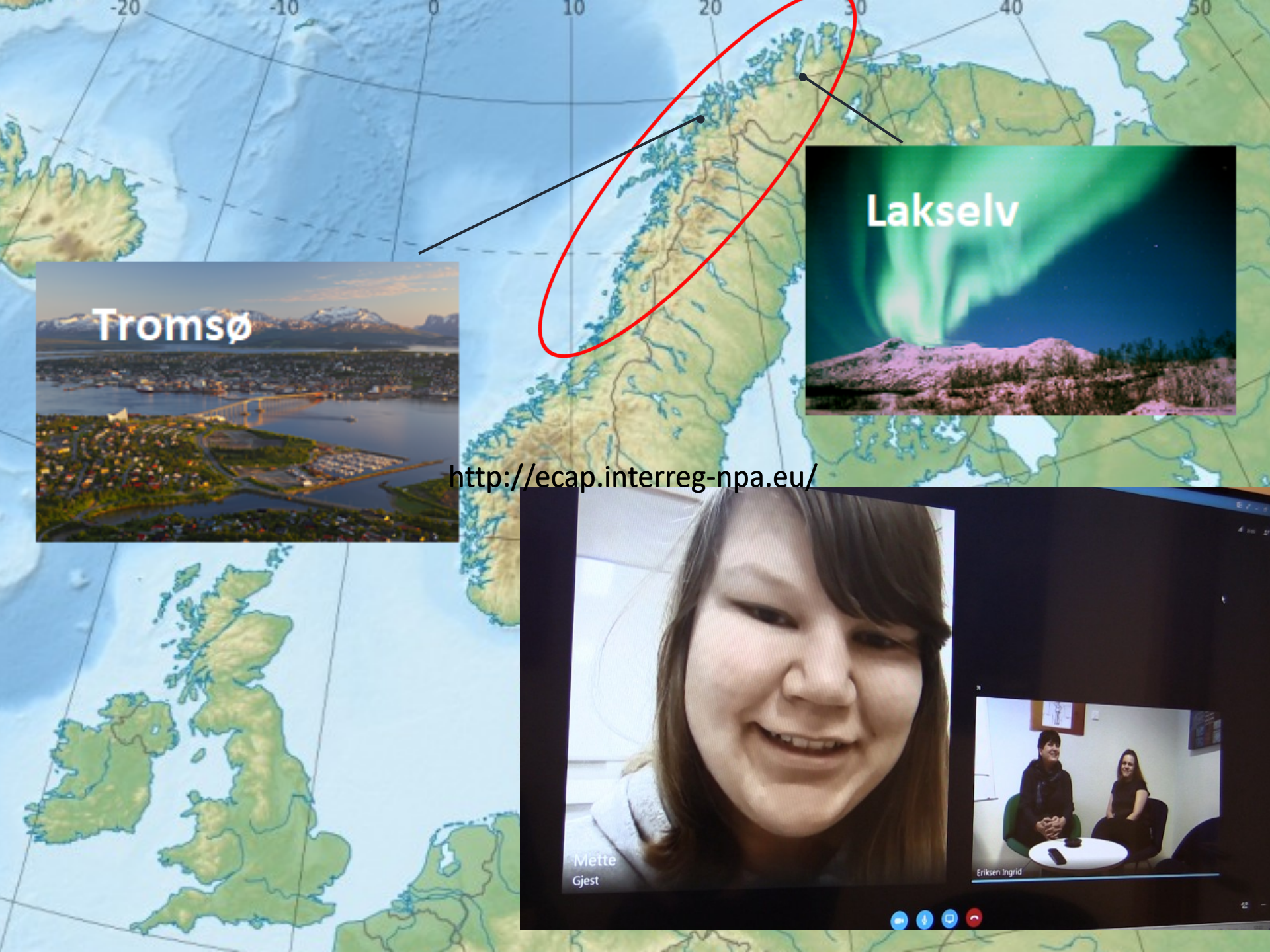
Video consultations at home





Mette (17) meets her therapist on Skype





<http://ecap.interreg-npa.eu/>



What are the problems?

- Waiting Times
- Overlapping Morbidities



- Referrals rising
- Confusion re: services
- Co-morbidities missed



- Referrals bouncing back from CAMHS



What does the DAWBA do?

- The DAWBA is a package of interviews, questionnaires and rating techniques designed to point to diagnosis (2-17 years)
- It covers the common emotional, behavioural and hyperactivity disorders
- Completed by parents, young people & teachers
- Supported by NHS research nurses
- Rated and reviewed by Child Psychiatrist
- Suggestion given as to best service to refer to, if any

Overview of Development and Well-Being Assessment

youthinmind

Dawba ID: yyy

Details: Hamish, 6 years old, Male

INFORMANTS

ID	Informant	Date	Age	Gender	About
yyy	Mother	01/02/2016	6	Male	Hamish
yyy	Teacher	23/02/2016	6	Male	Hamish

SYMPTOMS, IMPACT AND DIAGNOSTIC PREDICTIONS

Predicted probability of disorder: high

	Mother		Teacher		Prediction	
	Symp	Imp	Symp	Imp	DSM	ICD
Autism Spectrum	++	+++			--	--
Separation Anxiety	-				-	--
Specific Phobia	+				--	--
Social Phobia	-				--	--
Panic	-				--	--
Agoraphobia	-				--	--
PTSD	+	+++			-/+	-/+
OCD	-				--	--
BDD						

Free text from clinician

“Rater Comments

DAWBA scores highly for symptoms suggestive of attention deficit hyperactivity disorder and Oppositional defiant disorder. Although parent does report possible autistic traits, these could also be explained by ADHD and are not sufficient by themselves to seem to indicate an autistic spectrum diagnosis. In Highlands ADHD is primarily assessed by community paediatrics. Oppositional defiant disorder is generally a diagnosis of very limited clinical benefit.

Highland Rater, 22/03/2016

Thanks for listening

Elin.Breivik@ehealthresearch.no

Phil.Wilson@abdn.ac.uk

<http://ecap.interreg-npa.eu/>

